

# LINDBERGH

## APPARTEMENT A.4.2



**bruto oppervlakte:** 128,06 m<sup>2</sup>

**terras:** 6,32 m<sup>2</sup>

**dakterras 1:** 16,44 m<sup>2</sup>

**dakterras 2:** 6,33 m<sup>2</sup>

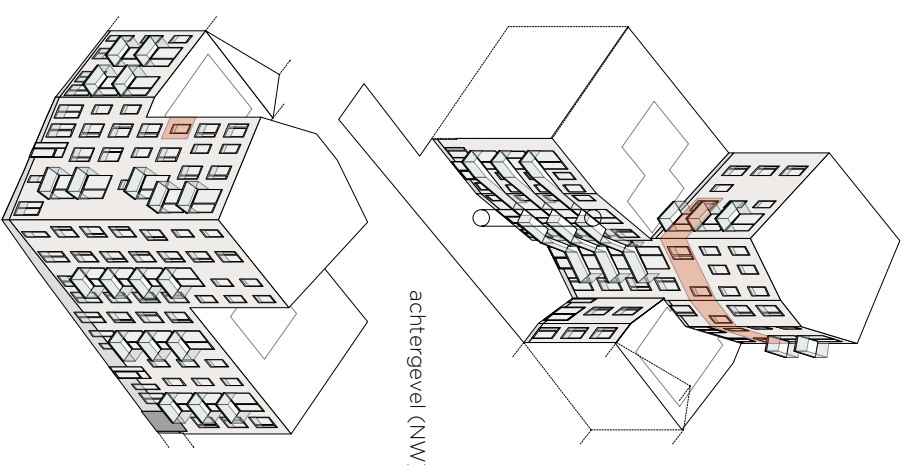
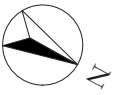
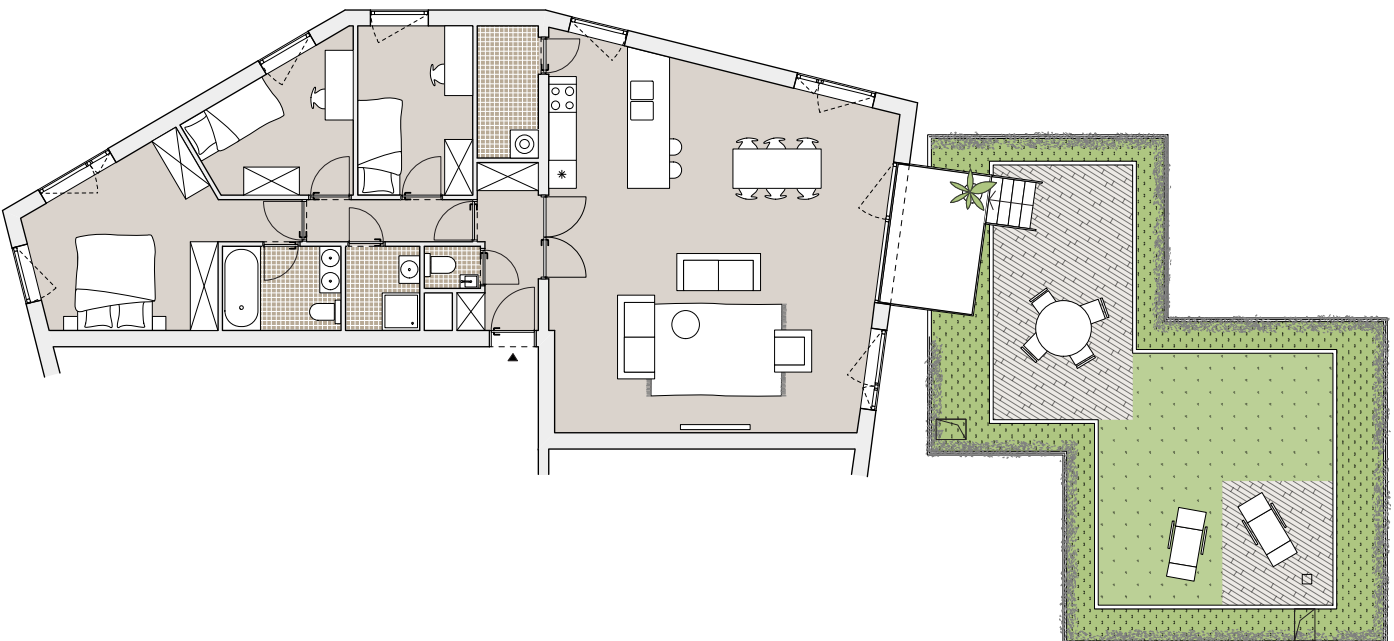
**daktuin:** 55,26 m<sup>2</sup>

**leefruimte:** 55,4 m<sup>2</sup>

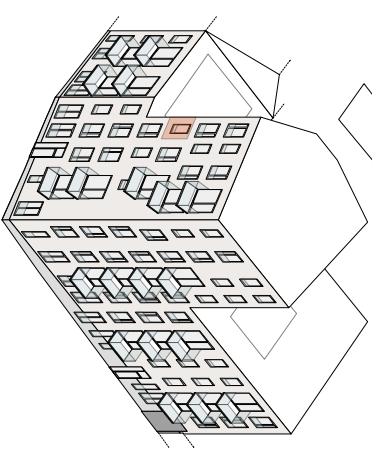
**slaapkamer 1:** 15,5 m<sup>2</sup>

**slaapkamer 2:** 9,0 m<sup>2</sup>

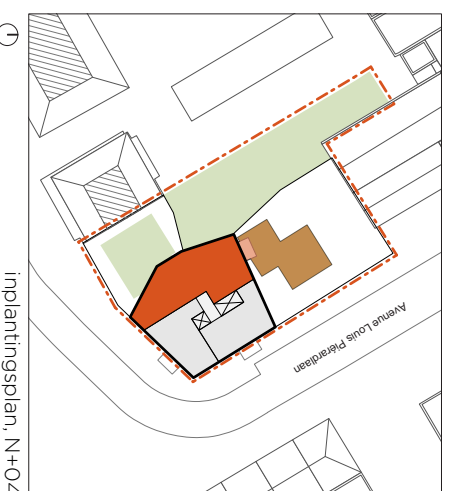
**slaapkamer 3:** 9,0 m<sup>2</sup>



achtergevel (NW)



straatgevel (ZO)



implantingsplan, N+04

Architect:  
**BOGDAN &  
VAN BROECK**

versie: 23.05.2016

De inrichting en het meubilair werden louter indicatief weergegeven, hier kunnen geen rechten aan ontleend worden.